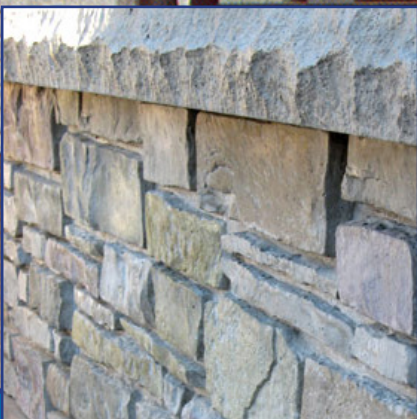
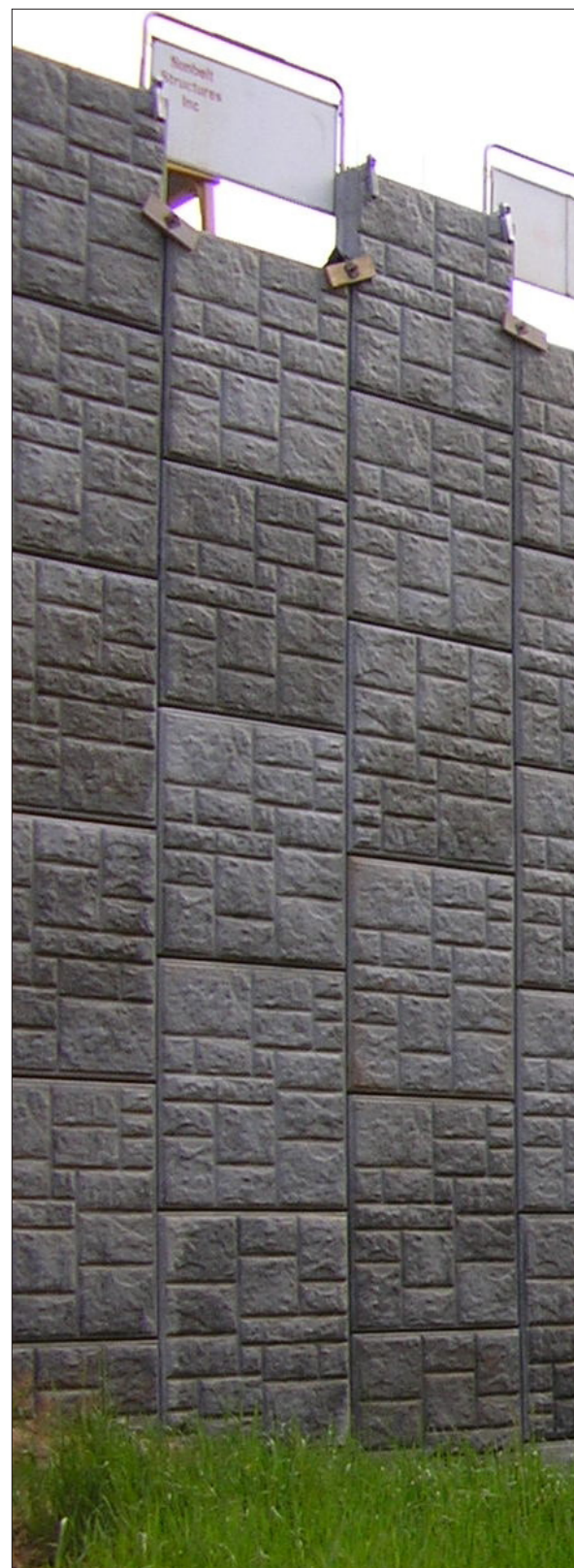


American Formliners

Formliners





More Patterns... More Possibilities!

Formliners can make a lasting impression in concrete at an affordable price. And American Formliners has the project experience, pattern recommendations and material options to make sure every cast-in-place, tilt-up or precast application is successful.

American Formliners has the patterns, including brick, rope, fractured fin, wood grain and most DOT textures, that will complement almost any concrete structure. These patterns are being specified by architectural/engineering firms and state Departments of Transportation, and installed by concrete contractors throughout North America every day.

American Formliners provides several advantages:

- State-of-the-art manufacturing
- Single-use and multi-use material options
- Hard-to-find pattern lengths for versatility
- Edge-to-edge match for seamless appearance
- Cost-effective pricing and nationwide availability
- Custom capability for unique applications

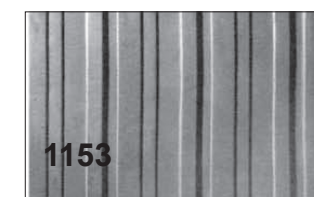
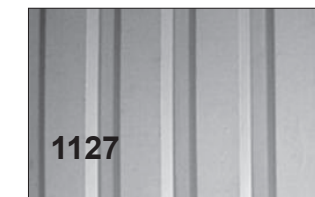
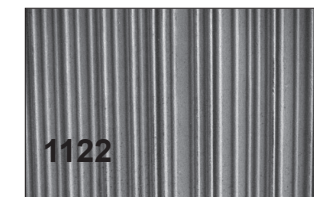
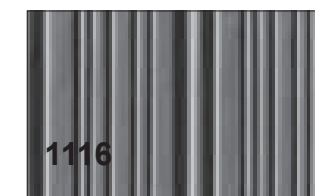
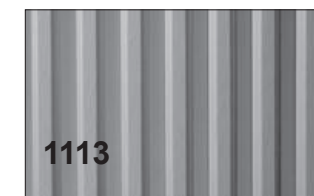
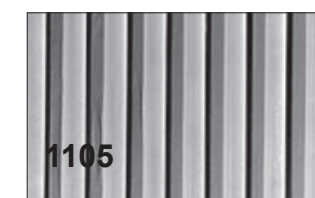
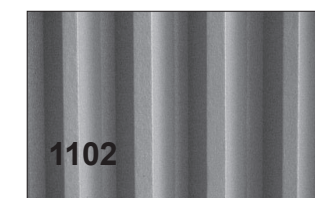
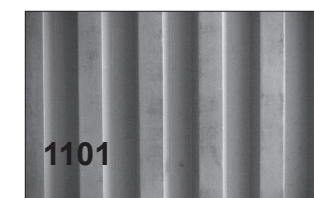
Surface details are permanently molded into the formliner material during production, resulting in a consistent concrete appearance.

Geometric and high-relief textures are reproduced with single-use HIPS plastic, medium-use ABS plastic or extended-use urethane materials.

Formliners are used in cast-in-place, precast or tilt-up forming. HIPS and ABS plastic materials can be installed using screws or staples. Urethane materials are typically plywood-mounted with adhesive and subsequently bolted to formwork.

Trapezoid Patterns

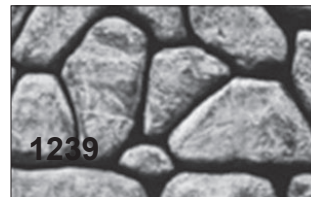
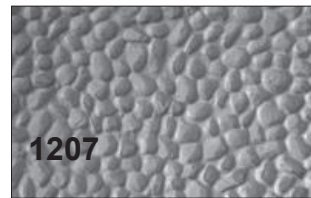
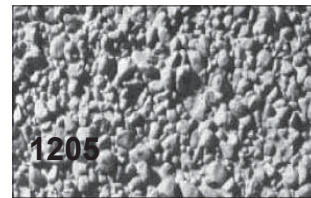
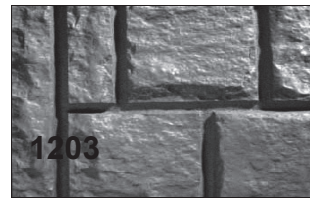
- 1100 – 1-1/2" Deep, 6" OC
- 1101 – 1-1/2" Deep, 4" OC
- 1102 – 1-1/2" Deep, 2" OC
- 1104 – 3/4" Deep, 2" OC
- 1105 – 1/2" Deep, 1-1/2" OC
- 1106 – 3/4" Deep, 1-1/2" OC
- 1107 – 1-1/2" Deep, 3" OC
- 1108 – 3/4" Deep, 4" OC
- 1109 – 1/2" Deep, 6" OC
- 1110 – 3/4" Deep, 4" OC
- 1111 – 1-1/2" Deep, 6" OC
- 1112 – 3/4" Deep, 6" OC
- 1113 – 1/2" Deep, 2-13/16" OC
- 1116 – ADOT Random Rib, 1-1/2" Deep
- 1117 – 1-1/2" Deep, 6" OC
- 1121 – 1/2" Deep, 6" OC
- 1122 – Random Striations
- 1127 – 1" Deep, 4" OC
- 1138 – 3/4" Deep, 1-1/4" OC
- 1153 – 1/4" Deep Tri-Level
- 1156 – 3/4" Deep Rib
- 1180 – 3/4" Deep, 6" OC
- 1181 – Saw Tooth, 1" Deep Rib, 1-1/2" OC
- 1195 – 3/4" Deep, 6" OC
- 1196 – 1" Deep, 2-1/8" OC



Refer to the Pattern Catalog for complete selection and dimensions.

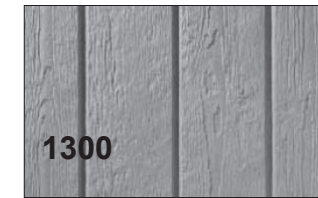
Stone Patterns

- 1200 – Light / Medium Sandblast
- 1201 – Heavy Sandblast
- 1202 – 1-1/4" Random Ashlar Stone
- 1203 – 1-1/2" Random Ashlar Stone
- 1205 – 3/4" Aggregate
- 1206 – 3/4" Deep Fractured Concrete
- 1207 – 1" Quartz
- 1209 – 1-1/8" Fractured Granite
- 1212 – Oregon Basalt
- 1232 – Rustic Random Ashlar
- 1239 – Random Fieldstone
- 1240 – Random River Rock, 3/4" Deep
- 1241 – Random River Rock, 1-1/2" Deep
- 1255 – Vertical Flagstone
- 1265 – Limestone
- 1266 – 2" Random Ashlar Stone
- 1273 – Runningbond Ashlar Stone
- 1281 – Bush Hammer
- 1285 – Pea Gravel
- 1288 – Random Dry Stack
- 1290 – Phoenix Limestone
- 1295 – Sierra Drystack
- 1296 – Long Island Ashlar



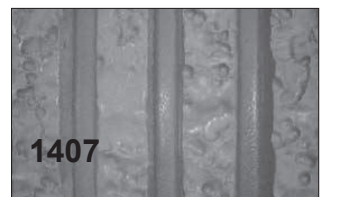
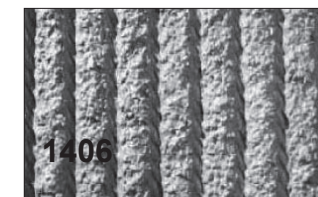
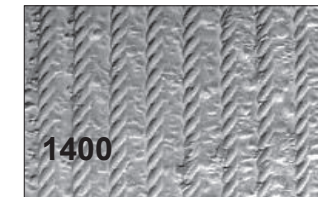
Wood Patterns

- 1300 – 1/4" Deep, 6" OC Grain
- 1301 – 1/8" Deep, 6" OC Pine Random Butt
- 1302 – 3/8" Rough Sawn Random Boards
- 1303 – 1/4" Deep Cedar Plank No Reveal
- 1304 – 1/2" Deep, 6" Smooth Shiplap
- 1305 – Barnwood
- 1306 – 3/4" Deep, 2" Cedar Grapestakes
- 1308 – 8" OC, Light Grain Random Butt Joints
- 1309 – 3-1/2" OC, Light Grain Protruding Reveal
- 1345 – Extra Rough Sawn Plank



Fractured Fin Patterns

- 1400 – 1/2" Rope
- 1401 – 1-3/4" Deep, 3" OC Rib
- 1404 – 1" Deep, 3" OC Rib
- 1405 – 3/4" Deep, 1-1/2" OC Fin
- 1406 – 1" Deep, 2-1/2" OC Rib
- 1407 – 3/8" Deep, 1-1/2" OC Rib
- 1408 – 1" Deep, 4" OC 3" Split Face Rib
- 1410 – 1" Deep, 5" OC Ripper Rebar
- 1412 – 3/4" Fin, 1-1/2" OC
- 1422 – 1-1/4" Fin, 3-3/8" OC
- 1432 – 1-1/2" Fin, 3-1/2" OC
- 1442 – 1" Fin, 2" OC

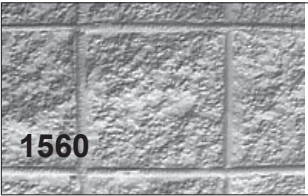
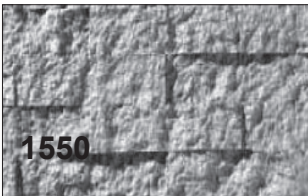
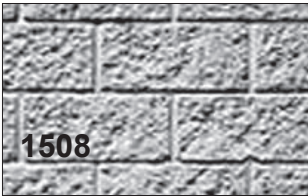


Refer to the Pattern Catalog for complete selection and dimensions.

Refer to the Pattern Catalog for complete selection and dimensions.

Masonry Patterns

- 1500 – 3/8” Deep, 8” x 16” Cinder Block
- 1501 – 2-1/4” x 7-1/2” English Brick
- 1502 – 8” x 8” Split Face Block
- 1506 – 1/2” Deep, 4” x 16” Slump Block
- 1507 – 3/4” Deep, 8” x16” Textured Block
- 1508 – 3/4” Deep, 9” x 18” Split Face Block
- 1509 – 1/4” Deep, 2-1/2” x 8” Smooth Brick
- 1510 – 2-1/8” x 7-1/2” Wire Cut Brick
- 1516 – 3/16” Deep, 8” x 16 Split Face Block
- 1519 – 2-5/8” x 7-5/8” Smooth Block Running Bond
- 1520 – 12” x 12” Split Face Granite Block
- 1522 – 8” x 8” Smooth Face Block
- 1523 – 8” x 8” Scored Smooth Face Block
- 1526 – 3/16” Deep, 8” x 16” Split Face Block Stacked
- 1529 – 16” x 2-5/8” Split Face Block
- 1539 – 2-5/8” x 7-5/8” Sand Cast Brick
- 1549 – 2-1/2” x 7-1/2” Smooth Brick
- 1550 – Random Drystack
- 1560 – 8” x 8” Stacked Bond Block
- 1577 – Custom Split-Face Block



Miscellaneous Patterns

- 1600 – 53” x 125’ Smooth Face
- 1603 – 1/2” Max Depth Flagstone

Thermoform

HIPS - High Impact Polystyrene

HIPS Formliners can be used to provide a textured concrete surface, in a limited application, at an affordable price. Single use only.

ABS - Acrylonitrile Butadiene Styrene

ABS Formliners exhibit impact resistance and UV shielding to reduce the damaging effects of sunlight. Multiple uses up to 10 times.

Elastomeric

PE - Polyurethane Elastomer

PE Formliners combine great resilience and high-tensile strength into a long-wearing surface. Multiple uses up to 40-50 times.

PPE - Premium Polyurethane Elastomer

PPE Formliners provide exceptional reproduction of the most difficult and complex designs for a consistent appearance. Multiple uses up to 100+ times.

HIPS - High Impact Polystyrene
(Single use only)

Properties	Rating	ASTM
IZOD Impact, ft.-lb/in.		
@70°F	2.0	D256
@0°F	1.3	D256
Tensile Strength	3,700 psi	D638
Heat Deflection	188	D695
Vicat Softening	212	D1525
Wt.lb./sq.ft.		
.070 mil	.449	
.090 mil	.577	
.110 mil	.705	
.130 mil	.833	
.150 mil	.966	

PE - Polyurethane Elastomer
(Multiple uses up to 40-50 times)

Properties	Rating	ASTM
Shore A Hardness	45-50	D2240
Tear Strength, PLI	55	D624
Tensile Strength, psi	500	D638 (D412)
Ultimate Elongation	240%	D638 (D412)

PPE - Premium Polyurethane Elastomer
(Multiple uses up to 100+ times)

Properties	Rating	ASTM
Shore A Hardness	60-65	D2240
Tear Strength, PLI	120	D624
Tensile Strength, psi	1150	D638 (D412)
Ultimate Elongation	1200%	D638 (D412)

ABS - Acrylonitrile-Butadiene Styrene
(Multiple uses up to 10 times)

Properties	Rating	ASTM
IZOD Impact, ft.-lb/in.		
@73°	5.6	D256
@0°	1.9	D256
Tensile Strength	5,300 psi	D638
Heat Deflection		
@264 psi	199	D648
@66 psi	211	D648
Falling Dart Impact, ft.-lb.		
@73°F	23	
@40°F	14	
Specific Gravity	1.05	D792
Wt. lb./sq.ft.		
.070 mil	.451	
.090 mil	.580	
.110 mil	.705	
.130 mil	.833	
.150 mil	.961	

Manufacturing Tolerances @ 70F
(All patterns, all materials)

Standard size: 4'x10'
Length: +1" to 2", -0" (shipped long for field trimming)
Width: ± 1/4"
Thickness: ± 1/16" at edge (except formliners over 1" thick)
Custom size: At customer request, additional charge.

Refer to the Pattern Catalog for complete selection and dimensions.

Leave a lasting impression with formliners!

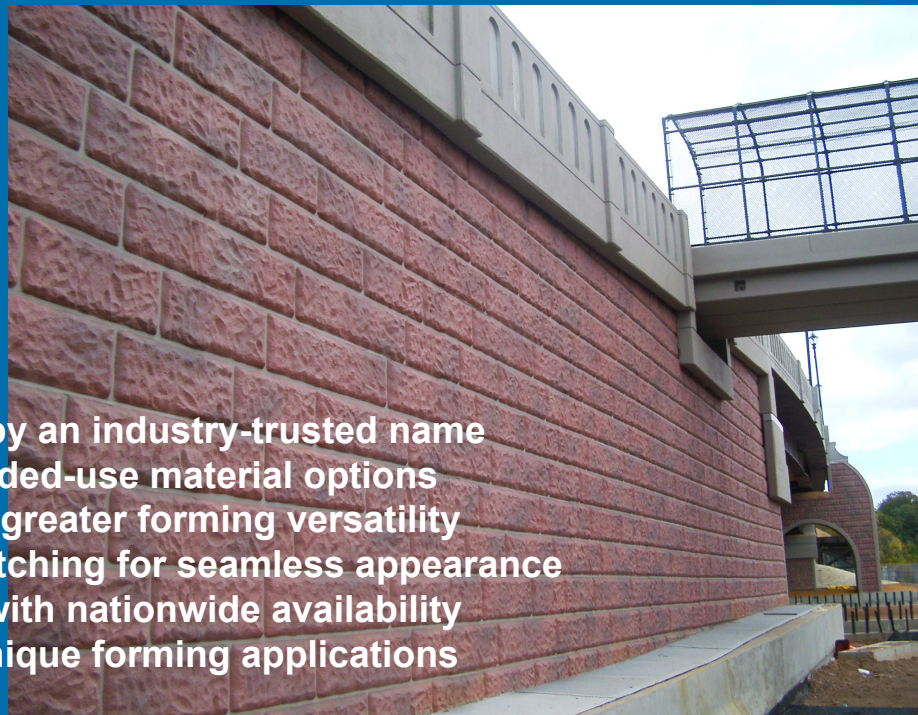


More patterns...

- Trapezoids
- Stones
- Wood Grains
- Fractured Fins
- Masonry
- Custom Services

More possibilities...

- State-of-the-art manufacturing by an industry-trusted name
- Single-use, multi-use and extended-use material options
- Hard-to-find pattern lengths for greater forming versatility
- End-to-end and side-to-side matching for seamless appearance
- Cost-effective material pricing with nationwide availability
- Custom design capability for unique forming applications



American Formliners

645 Airport Road • Centralia, IL 62801 • 877-533-5842 • Fax 618-533-5840

www.americanformliners.com © 03/25